

AUXILIARY CONTACTS



AUXILIARY CONTACTS

At necessity the element provide auxiliary number of contacts. They are specially designed for mounting on the movable part of the magnetic core of the contactors LC1-D series.

FUNCTIONS:

- extending the number of the operative contactors up to 4 in different

Type	Number of contacts	Rated current	Section of the conductor (mm ²)	Denor code
LA1-DN20	2NO	6A	0,5-1	LA1D20
LA1-DN11	NO+NC	6A	0,5-1	LA1D11
LA1-DN02	2NC	6A	0,5-1	LA1D02
LA1-DN40	4NO	6A	0,5-1	LA1D40
LA1-DN22	2NO+2NC	6A	0,5-1	LA1D22
LA1-DN04	4NC	6A	0,5-1	LA1D04



TIME DELAY CONTACT BLOCK LA2 / LA3

LA2 /LA3 is designed to set time intervals from 0.1 to 180s in different control schemes. It is used most frequently in combination with contactors from LC1-D series to form "star/delta" starters for electrical motor control, as it provides the necessary time for motor winding.

Type	Number of contacts	Delay type	Time delay	Denor code
LA2-DT0	NO+NC	On delay	0.1~3s	LA2DT0
LA2-DT2	NO+NC	On delay	0.1~30s	LA2DT2
LA2-DT4	NO+NC	On delay	10~180s	LA2DT4
LA3-DT0	NO+NC	Off delay	0.1~3s	LA3DT0
LA3-DT2	NO+NC	Off delay	0.1~30s	LA3DT2
LA3-DT4	NO+NC	Off delay	10~180s	LA3DT4



AUXILIARY CONTACTS LA8

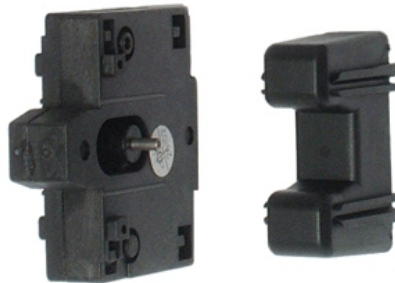
Providing additional number of plug points

Type	Rated current	Section of the conductor (mm ²)	Denor code
LA8-DN11	6A	0,5-1	LA811
LA8-DN20	6A	0,5-1	LA820

COILS

Coil D series used for LC1-D contactors.

Type	Usage	Denor code according to the coil	
		230V	400V
D2	LC1-D9A~18A	D2230	D2400
D4	LC1-D25A~32A	D4230	D4400
D6	LC1-D45A~95A	D6230	D6400



MECHANICAL INTERLOCK

LA9 series mechanical interlocks used for LC1-D contactors.

Type	Usage	Denor code
LA9-32	LC1-D9A~32A	LA932
LA9-95	LC1-D40A~95A	LA995